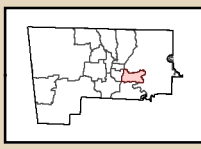


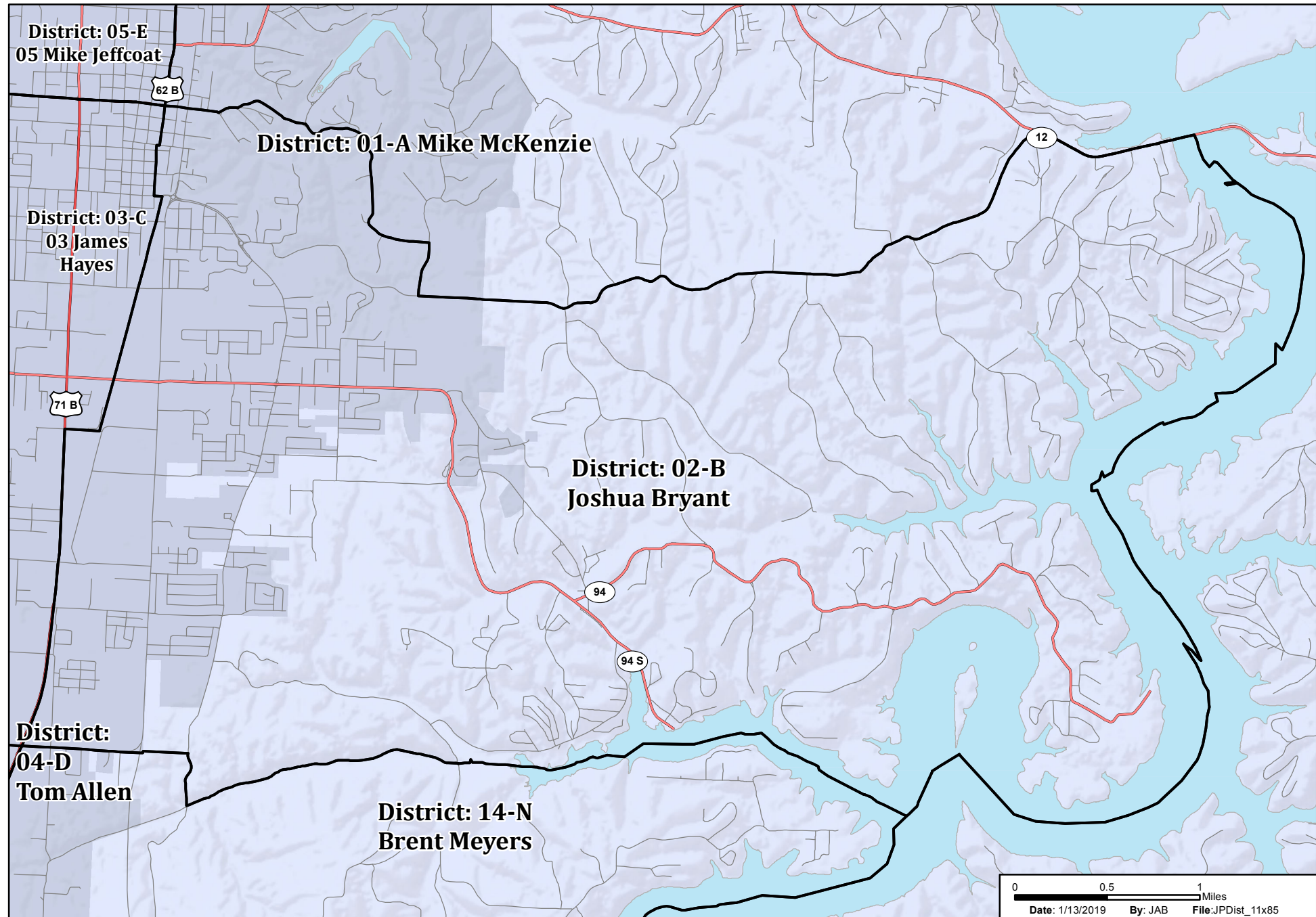
District: **Benton County, Arkansas**  
**02-B** Justices of the Peace



Benton County GIS Department  
215 E. Central Ave.  
Bentonville, Arkansas 72712  
(479) 271-1749  
GIS.BentonCountyAR.gov



Honorable 02 Joshua Bryant  
2134 Pleasant Ridge Rd  
Rogers, AR 72756  
Phone: 479-430-3570  
joshua.bryant@bentoncountyar.gov



0 0.5 1 Miles  
Date: 1/13/2019 By: JAB File: JPDist\_11x85

ACCURACY OF MAPS NOT GUARANTEED -  
USE FOR LEGAL MATTERS CAUTIONED.