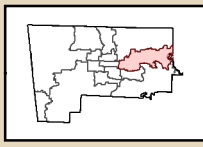


District:

Benton County, Arkansas

1

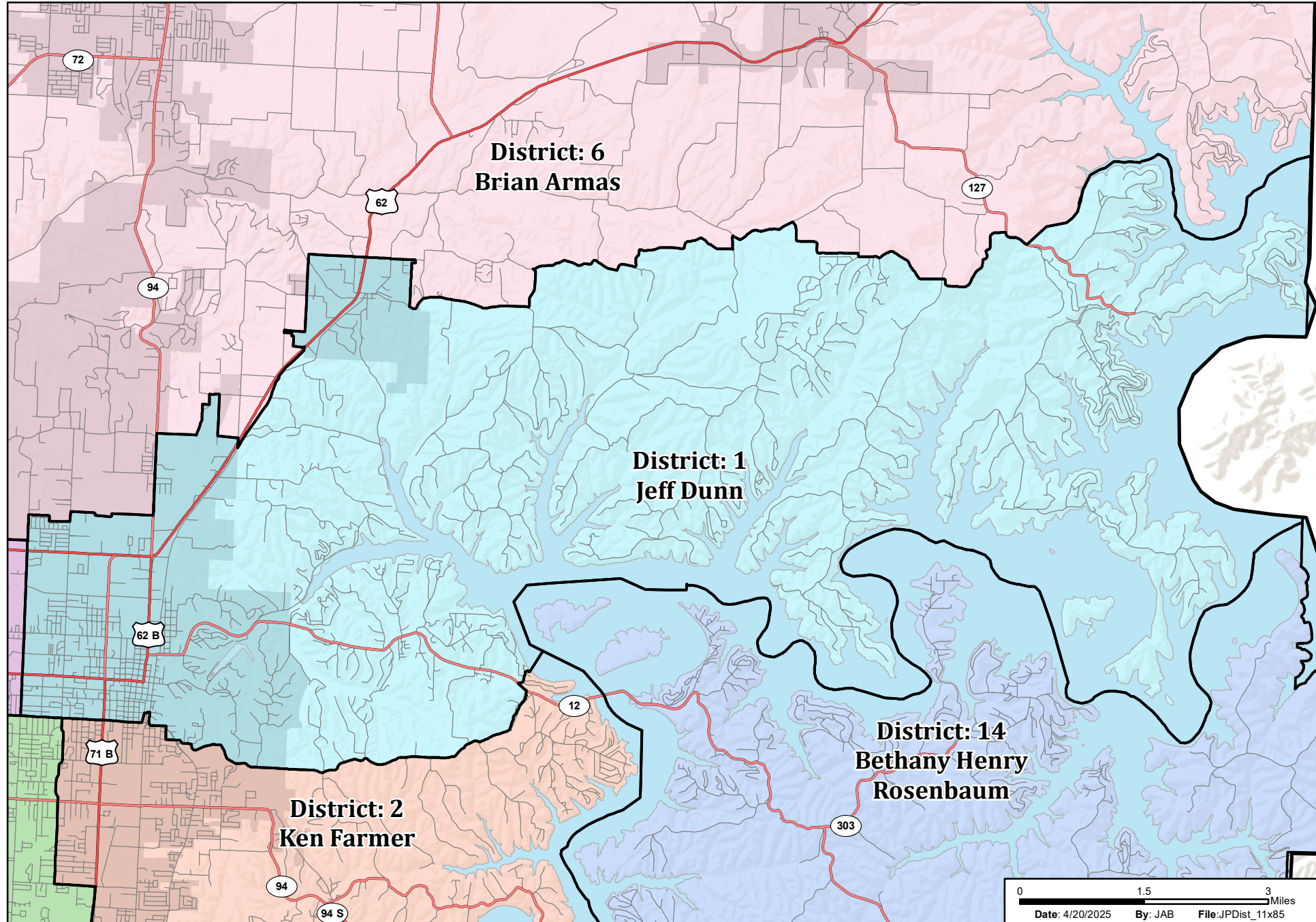
Justices of the Peace



Benton County GIS Department
215 E. Central Ave.
Bentonville, Arkansas 72712
(479) 271-1749
GIS.BentonCountyAR.gov



Honorable 01 Jeff Dunn
13521 Pikes Peak Cir
Rogers, AR 72756
Phone: 479-586-2854
jeff.dunn@bentoncountyar.gov



0 1.5 3 Miles
Date: 4/20/2025 By: JAB File: JPDist_11x85